

# iRed Lite – Manual

**iRed Lite (iRL)** was made for your Mac with a built-in IR port, i.e. **all Intel Macs** (iMac, Mac mini, MacBook, MacBook Pro) and the latest iMac G5.

Together with your **Apple Remote (AR)**, iRed Lite allows you to control your Mac – in addition to **Front Row**.

**iRed Lite does not interfere with Front Row** but adds more functions to your Apple Remote.

## The Features

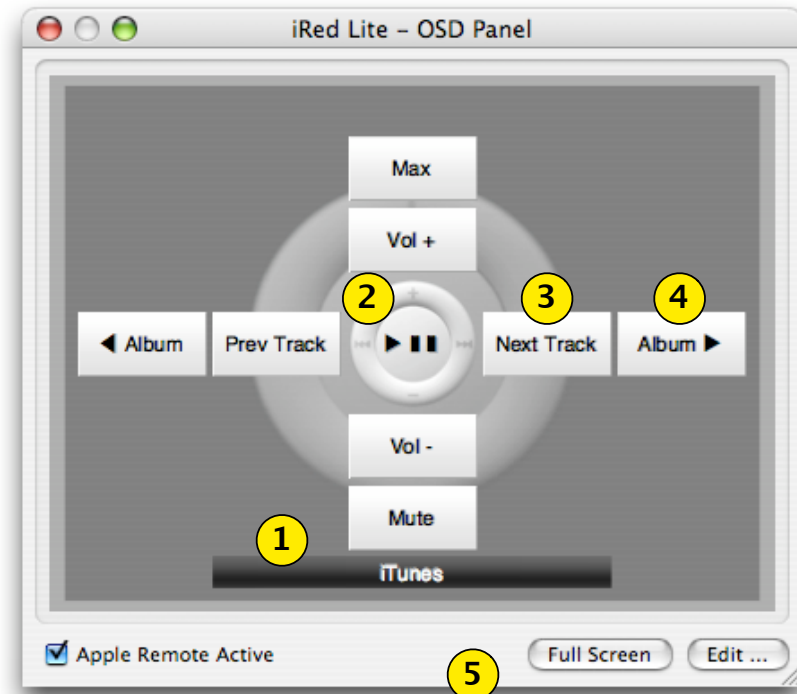
- Onscreen Display (OSD)
- Fullscreen OSD optional
- "Remote Layers" to control different applications
- Automatic activation of remote layers with application
- Audio feedback optional
- Several example layers provided for iTunes, EyeTV, PowerPoint, Keynote, Finder, ...
- Runs from menu bar – does not occupy space in your Dock
- Easy to be adopted to your special needs
- Build layers by Drag&Drop
- Expert mode vs. Easy mode
- Built-in editor for control actions
- AppleScript actions, Keystroke action, more to come
- Recognizes Apple Remote click, hold and double-click
- **NEW:** handles Apple Remote IDs (see separate manual from Help menu)
- **NEW:** automatically switch off while Front Row is active

## Usage

On Startup iRed Lite (iRL) will activate your Apple Remote (AR), so that every click will be routed to iRL.

- **Press MENU once** on your Apple Remote to bring up the On-screen Display (OSD)

This OSD Panel will show you what action is to be expected on pressing the respective button on your Apple Remote:



1. The active layer is displayed here, **hold MENU** to change.
2. Press center button on your AR will tell iTunes to play/pause
3. Press right button once to proceed to next track
4. **Double-press** the right button to go to next album
5. Use controls to deactivate the AR, enter Full Screen mode or open the Editor.

## Fullscreen mode

To enable fullscreen mode either click "Full Screen" on OSD panel or choose "Use Full Screen OSD" from menu.

If you the press MENU once, the full screen OSD appears. Press MENU again and the OSD disappears.

The full screen OSD is meant for your information: "**What will happen if I press the respective button on my Apple Remote now**".

You may also use the full screen OSD by mouse:

- click buttons to perform the respective action
- click layer button to enter menu mode
- click on an empty space to close the OSD

## Menu Mode

If you hold the MENU button for a second, iRL will go into menu mode, i.e. you may now choose a different layer:

- press left/right or up/down to switch layer
- press center or menu to activate selected layer

The currently selected layer may be announced by the built-in speech synthesizer. So you need not to look at the screen to change layers!

The next version of iRL will feature a visual menu of all layers and makes navigating much easier!

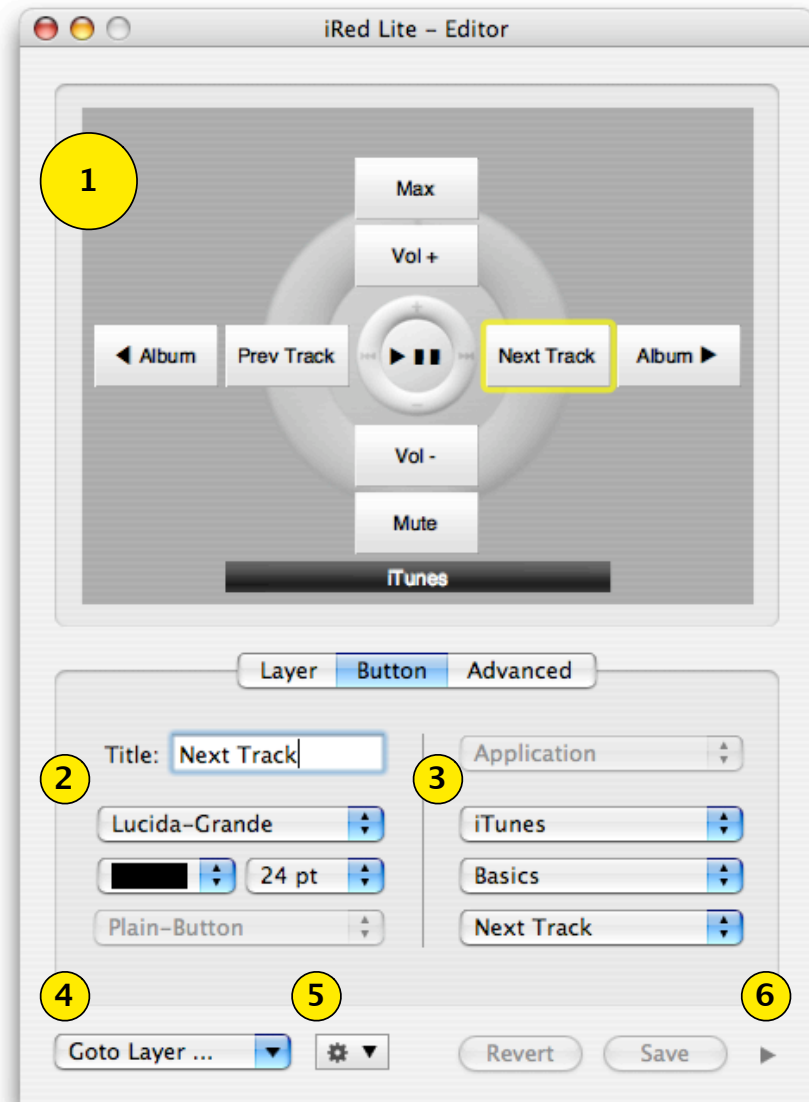
**Holding down MENU button while in menu mode will deactivate the Apple Remote.** Holding down again will activate the Apple Remote again. This way you can quickly choose to enable/disable iRed Lite, to use Front Row, e.g.

## Keyboard control

All OSD buttons can be controlled by your keyboard, too.

- press cursor keys for the respective OSD buttons
- press SHIFT and the cursor keys to perform the double-actions
- press RETURN for center action
- press SPACE for menu mode
- press ESCAPE to close OSD panel or full screen.

## Editor



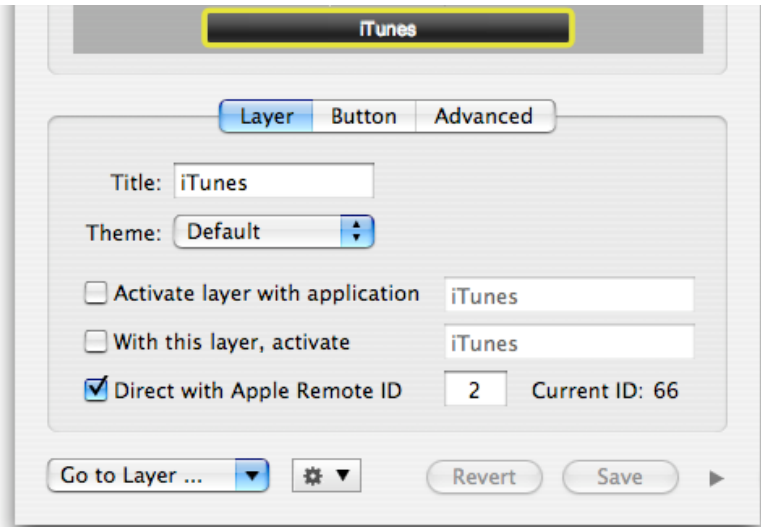
To open the Editor Window, click "Edit..." on the OSD panel or choose "Show Editor" from iRL's menu.

These are the main parts of the Editor window:

1. OSD panel as seen before. Here you select the OSD buttons to be edited. The action "behind" the button will not be performed!
2. Change the appearance of the button, change title, font, font size or font color.
3. Choose the action behind the button. The three popups are dedicated to Applications, action groups and actions.
4. Change the displayed layer by this popup menu.
5. Popup menu with more functions: remove selected button, create/remove layers and open the Character Palette for access to special characters and symbols like arrows.
6. This small arrow button will put you into Expert Mode (see below)

## "Layer" section

If you want to change the settings of the layer, click the respective tab or the layer OSD button itself. The lower part will change to this view:



Here you can change the name of the layer and some automatic activation mechanisms:

- **Activate layer with application:** if the named application becomes active, this layer will automatically become active, too.
- **With this layer, activate...:** If you change this layer by using menu mode, you may also activate an application at the same time.
- **NEW: Direct with Apple Remote ID:** directly activate this layer by pressing MENU of the Apple Remote with the respective ID, and directly perform buttons of this layer, without needing to activate this layer before (please see separate manual from Help menu)

The **Theme** popup button is not functional by now. Expect more designs to be applicable to the OSD soon!

## "Advanced" section

If you want to put more than one action onto a button, this section is for you.

More to be described soon ...

## Editor – Expert Mode

Clicking the small triangle on the lower right corner of the OSD panel, the Editor window will expand into expert mode.

There you have the full control on actions, applications and grouping of actions.

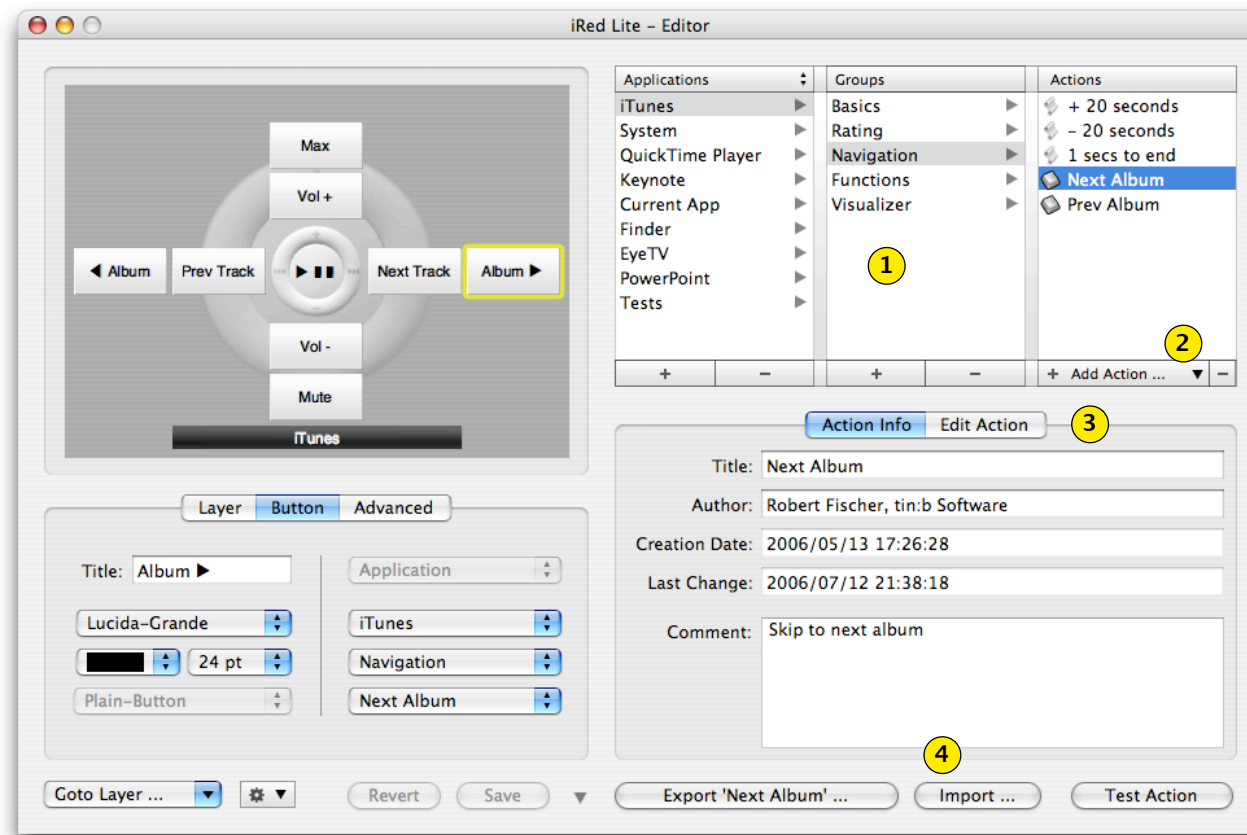
iRed Lite features a powerful editor to let you build your own actions to support your individual workflow.

However, to control other applications you'll probably need to know basics about AppleScript, Apple's powerful yet easy to learn language for scripting applications.

If you are not familiar with AppleScript you may use "keystroke actions", e.g. send iTunes a "Command-Cursor-Right" to switch to the next album. These kind of actions are very easy to achieve with iRed Lite.

These are the basic elements of the expert's Editor window:

1. Hierarchical browser to organize your actions by applications and groups.
2. Popup menu to create different kinds of actions.
3. Switch between basic infos of selected action and the "editing part" (see below)
4. You may export actions/groups/applications as well as import them by these buttons.



## Creating a new Action

Actions can only be created as part of a group. Please create a group at your will using the "+" buttons in **Applications** and **Groups**. Renaming groups is simply done by double-clicking and editing the table entries. Reordering can be done by Drag&Drop, even between groups (NEW).

**If you try to delete an action which is in use by any OSD button, you will be warned.**

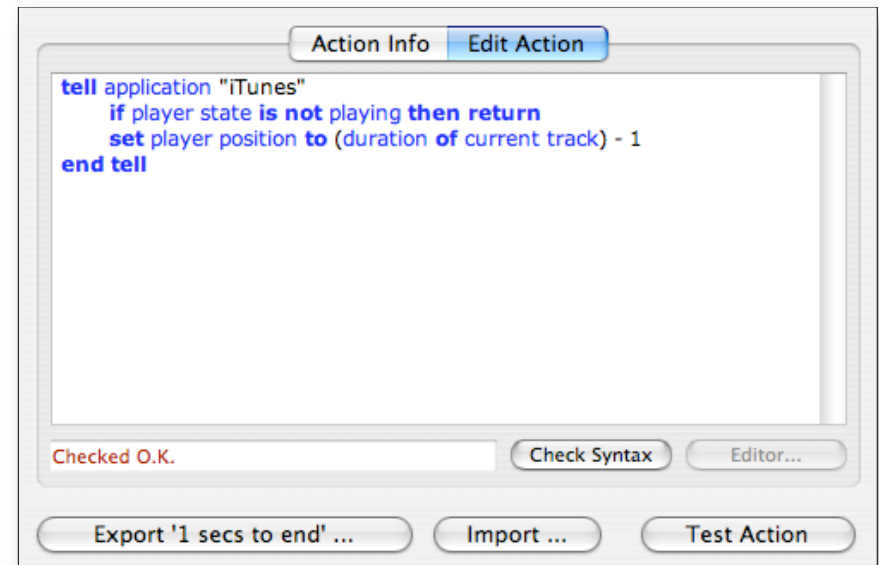
If you create a new action the current date and time will be filled in automatically, as well as the author's name. You may set your own name in IRL's preferences. In an upcoming version of iRL all actions may be shared to and loaded from an online repository and it's a good idea to make yourself visible there.

Open the popup button "Add Action..." below the actions table and choose "AppleScript" or "Keystroke" from there – the other action types are reserved for future versions. The new action is selected immediately to let you edit its name.

## AppleScript Action

If you have created an AppleScript action, you'll have to enter, well, AppleScript code.

Choose the tab "Edit Action" as shown below, then enter your code:



This example is very simple to read and so are many AppleScripts. However, it is somewhat difficult to find out "the right wordings".

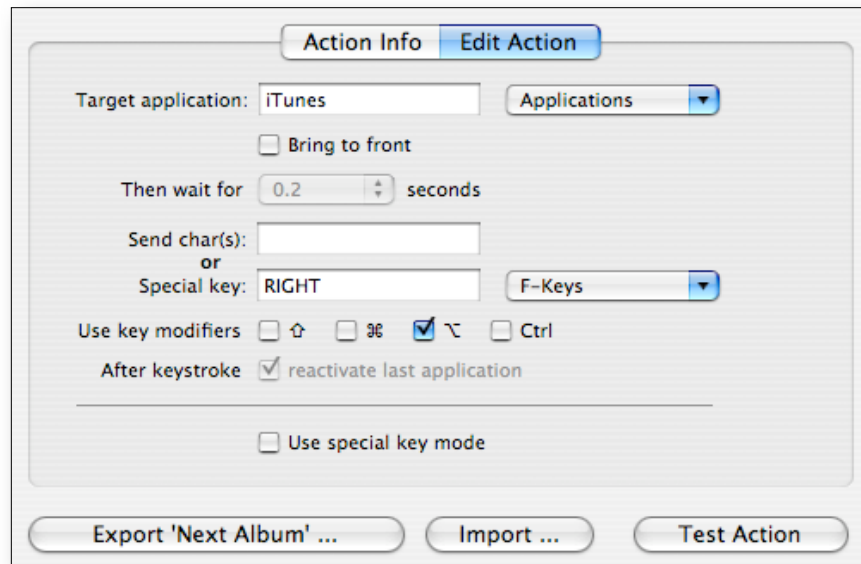
After entering AppleScript code, please click "Check Syntax" and your code will be analysed. If all is going well, the code is formatted and highlighted.

You may test this action immediately by pressing "Test Action".

## Keystroke Action

Keystroke actions are a very simple means to control applications. Often it's the only way to get things done.

This screenshot shows a typical keystroke example:



This panel is to be read from upside down:

Use application **iTunes** as the target for the keystroke. Now press "**RIGHT**" cursor key, together with "Option" key (shown as **⌘**).

By the way, this keystroke (Option-Right) is the only way to make iTunes jump to the next album.

There are several more options. Creating keystrokes is sometimes a process of trial-and-error. Some applications need a "**Bring to front**" before they accept keystrokes, some need a little time to

be waited after activation (See popup button).

If you need to activate the target application, you may later **reactivate the last application** by another option.

At last, some apps behave even more strange, e.g. Flash plugins in web browsers, or PowerPoint, ... They need a "**special key mode**" which can be enabled by the last option.

The popup "**Applications**" enters application names into the text field to the left. It holds all active applications (**NEW**).

If you need to enter special keys like F-Keys, please use the respective popup menu, as function keys will mostly perform their dedicated action immediately and iRL has no chance to get the key code itself.

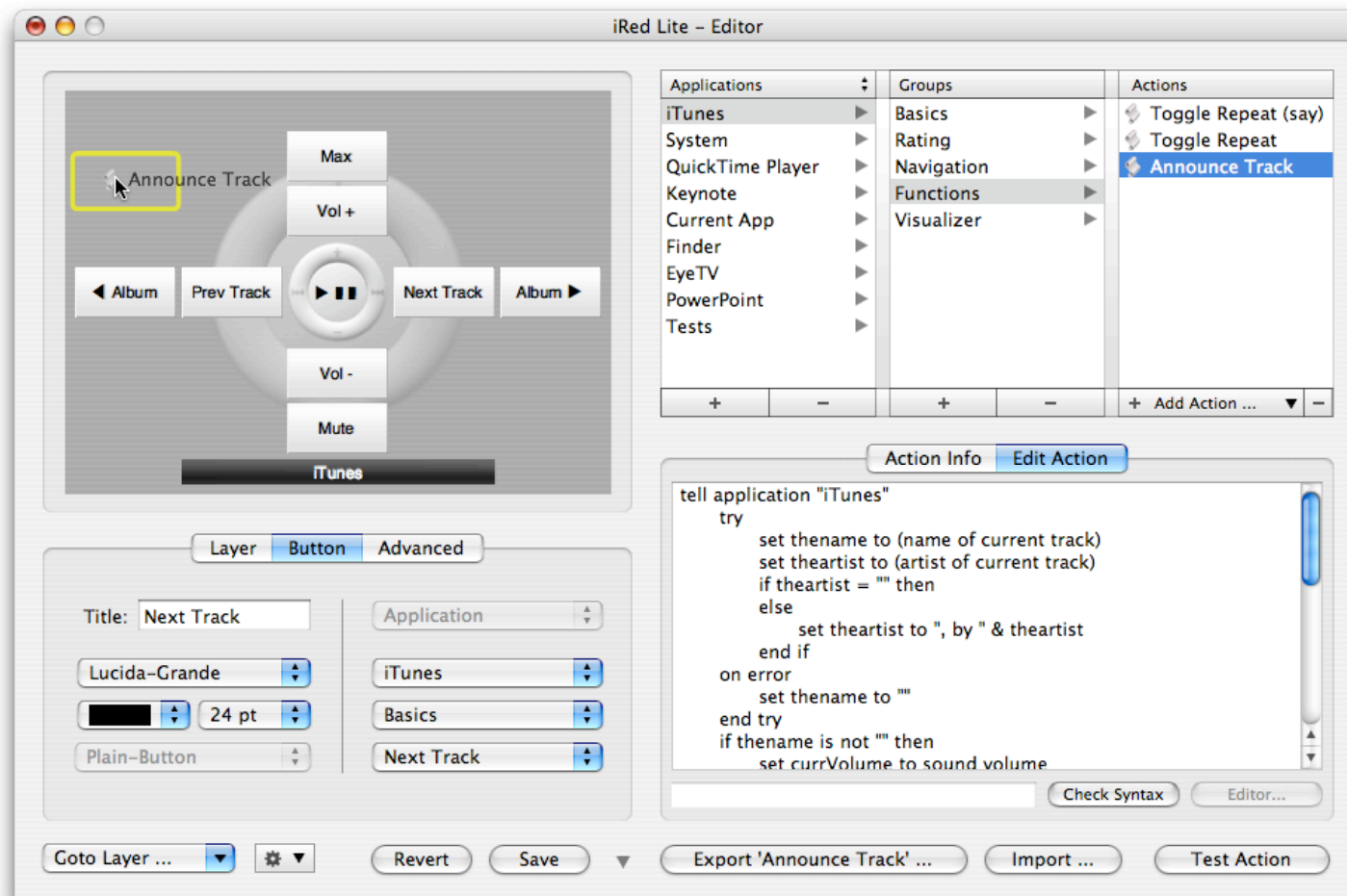
## Adding Actions to OSD Buttons

Now that we have actions we need to assign them to the buttons of the Apple Remote.

This is fairly easy: Drag&Drop an action from the action list on the right directly onto the OSD panel:

The button will take the action's name by default, which you may then change on the left pane.

You may wonder "what are the OSD buttons besides the usual ones are for?". Well these buttons are by now only accessible by mouse but will soon be accessible by Apple Remote as well. **Stay tuned!**



## Technical Details

iRed Lite stores its library containing your remotes and actions in XML format.

You find this file named "archive.xml" in a folder "**iRed Lite**" in "**Library/Application Support**" in your home folder.

The preferences are stored as **de.tinb.iRedLite.plist** in the usual place, i.e. "**Library/Preferences**" in your home folder.

## iRed Lite – The Future

This manual describes a third – beta – version of iRed Lite.

Several features may change over time, some may not work as expected yet.

Many features are already on my to-do-list, here a quick glance:

- ~~Copy/Paste actions~~ – done
- Online repository for actions, layers, remotes
- ~~Undo support~~ – done

If you interested in a special feature, please contact me:  
[ired@filewell.com](mailto:ired@filewell.com)

One last thing: **iRed Lite** will become shareware soon. My price tag is about \$12 (10 €), which should be affordable and will help me to drive iRed Lite to an outstanding product.

---

Have Fun,

Robert Fischer, [tin:b Software](http://tin:b Software), February 2007